

Human Services Program | Risk Control Resources



WEBSITE

Visit our website for updated information about programs, services, applications, checklists, safety bulletins and vendors serving our insureds.
www.berkleyhumanservices.com/riskcontrol



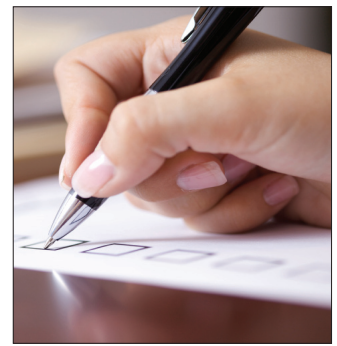
RISK CONTROL CONSULTANTS

Experienced and educated staff providing coordinated risk control resources and services for our insureds.



RISK CONTROL ARTICLES

Risk control newsletters and safety bulletins on current topics offering risk management solutions to the common issues faced by our insureds.



SAFETY CHECKLISTS & SURVEYS

Various checklists and surveys are available at www.berkleyhumanservices.com/riskcontrol or by contacting a Risk Control Consultant.



VEHICLE SAFETY KITS

Includes "Safety Guidance for Motor Vehicles" tip guide and "Accident Report for Motor Vehicles" to help record the details of an accident and gather information to assist in reporting claims.



VIRTUAL RISK MANAGEMENT CLASSES

- Available at www.berkleyhumanservices.com/riskcontrol
- Courses offered through J.J. Keller. View the Full Course Catalog at: <https://www.berkleyhumanservices.com/training-solutions/>
- Courses include
 - Child Protection in Youth-Serving Organizations
 - Contracting with Care
 - Safe Facilities, Safe Programs
 - Safe Vehicles and Safe Drivers
 - Screening Paid and Volunteer Staff

OTHER RESOURCES:

- **IntelliCorp** – Insureds may obtain IntelliCorp's Platinum search; which includes a multi-state criminal background check, check of sexual offender registries and more, at a discounted rate.
www.intellicorp.net/
- **Nonprofit Risk Management Center (NRMC)** Berkley Human Services is a corporate sustainer of the Nonprofit Risk Management Center which provides risk management resources and services to insureds, self-insureds and other clients.
www.nonprofitrisk.org/

Products and services are provided by one or more insurance company subsidiaries of W. R. Berkley Corporation. Not all products and services are available in every jurisdiction, and the precise coverage afforded by any insurer is subject to the actual terms and conditions of the policies as issued.